

VOLUNTEER

OCEAN TRASH DATA FORM



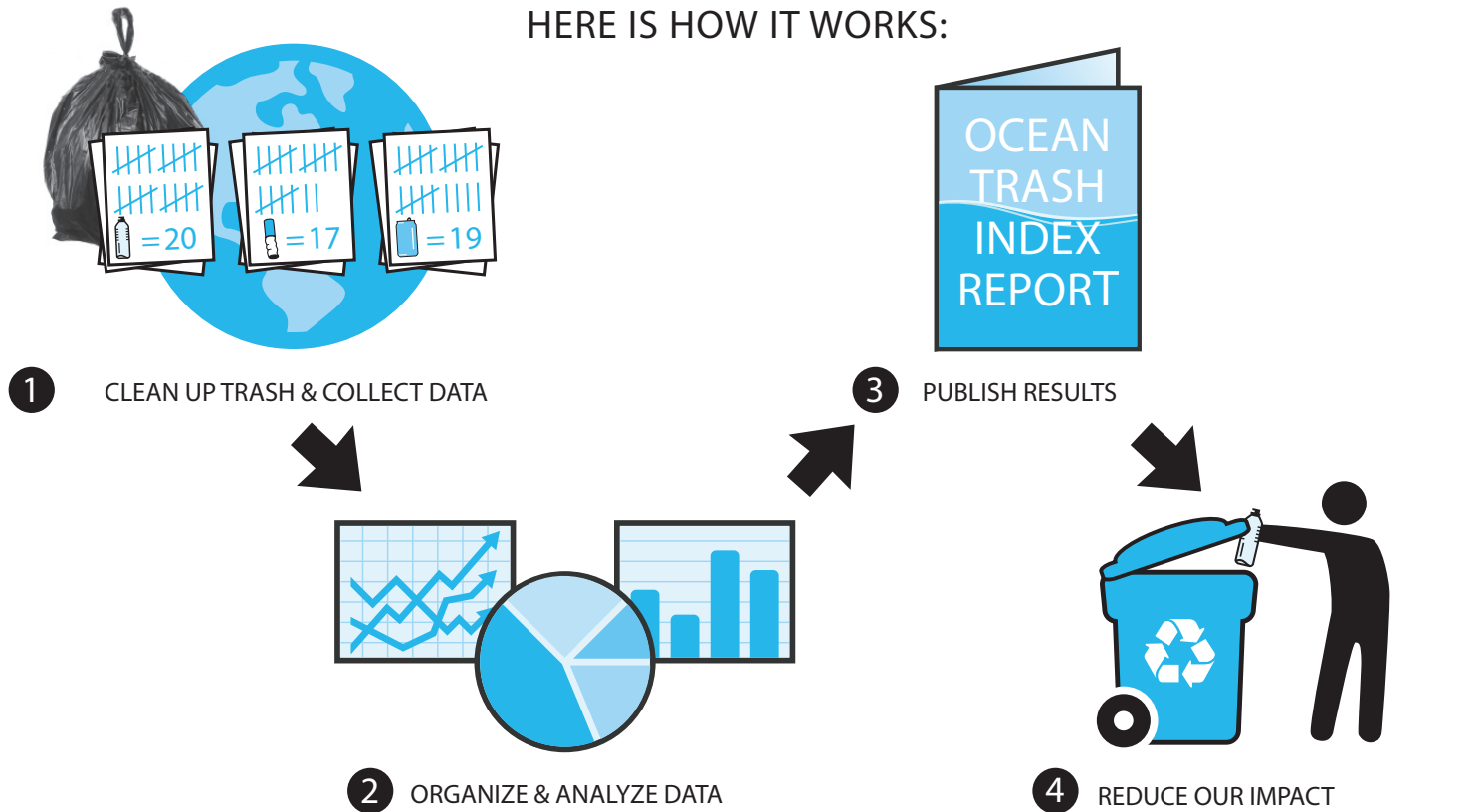
清潔香港
HONG KONG
CLEANUP

Brought to you by:

NOMURA

Trash ranks as one of the most serious pollution problems choking our planet. Far more than an eyesore, a rising tide of litter threatens human health, wildlife, communities and economies around the world. Our planet faces many challenges, but trash should not be one of them. Ocean trash is entirely preventable, and the data you collect is part of the solution. The Hong Kong Cleanup is part of the world's largest environmental volunteer effort.

HERE IS HOW IT WORKS:



SITE INFORMATION:

Cleanup Site Name:

District or Neighborhood:

Country:

TYPE OF CLEANUP: Land: Underwater: Watercraft:

MOST UNUSUAL ITEM COLLECTED:

NUMBER OF VOLUNTEERS WORKING ON THIS CARD:

adults

children (under 12)

Please remember to return your data after your cleanup: simply visit HKcleanup.org and click "Submit Cleanup Data". Thank you!



海灘清潔
COASTAL CLEANUP
CHALLENGE 比賽

www.HKcleanup.org

Organizer:

ECOZINE

Global Partners :




OCEAN CONSERVANCY'S
International
**Coastal
Cleanup**



TRASH COLLECTED

Citizen scientist: Pick up all trash and record all items you find below. No matter how small the items, the data you collect are important for better understanding the issue.

EXAMPLE: TOTAL #
 Plastic Bags:  = 8

Please **DO NOT** use words or check marks. Only **numbers** are useful data.

MOST LIKELY TO FIND ITEMS: TOTAL #

Cigarette Butts:	=	Beverage Bottles (Plastic) :	=
Food Wrappers (candy, chips, etc.) :	=	Beverage Bottles (Glass) :	=
Take Out/Away Containers (Plastic):	=	Beverage Cans:	=
Take Out/Away Containers (Foam):	=	Grocery Bags (Plastic):	=
Bottle Caps (Plastic) :	=	Other Plastic Bags:	=
Bottle Caps (Metal):	=	Paper Bags:	=
Lids (Plastic):	=	Cups & Plates (Paper):	=
Straws/Stirrers:	=	Cups & Plates (Plastic):	=
Forks, Knives, Spoons:	=	Cups & Plates (Foam):	=

FISHING GEAR: TOTAL #

Fishing Buoys, Pots & Traps:	=
Fishing Net & Pieces:	=
Rope (1 yard/meter = 1 piece):	=
Fishing Line (1 yard/meter = 1 piece):	=

PACKAGING MATERIALS: TOTAL #

6-Pack Holders :	=
Other Plastic/Foam Packaging:	=
Other Plastic Bottles (oil, bleach, etc.) :	=
Strapping Bands :	=
Tobacco Packaging/Wrap:	=

OTHER TRASH: TOTAL #

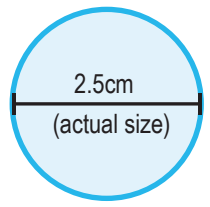
Appliances (refrigerators, washers, etc.):	=
Balloons:	=
Furniture:	=
Cigarette Lighters:	=
Construction Materials:	=
Fireworks:	=
Tires:	=

PERSONAL HYGIENE: TOTAL #

Condoms:	=
Diapers:	=
Syringes:	=

TINY TRASH LESS THAN 2.5CM: TOTAL #

Foam Pieces	=
Glass Pieces	=
Plastic Pieces	=



DEAD/INJURED ANIMAL	STATUS	ENTANGLED	TYPE OF ENTANGLEMENT ITEM
	Dead or Injured	Yes or No	

ITEMS OF LOCAL CONCERN:

1.	2.	3.
----	----	----

CLEANUP SUMMARY (circle units)

Number of Trash Bags Filled: Weight of Trash Collected: lbs/kgs Distance Cleaned: miles/km