

VOLUNTEER

URBAN CLEANUP DATA FORM



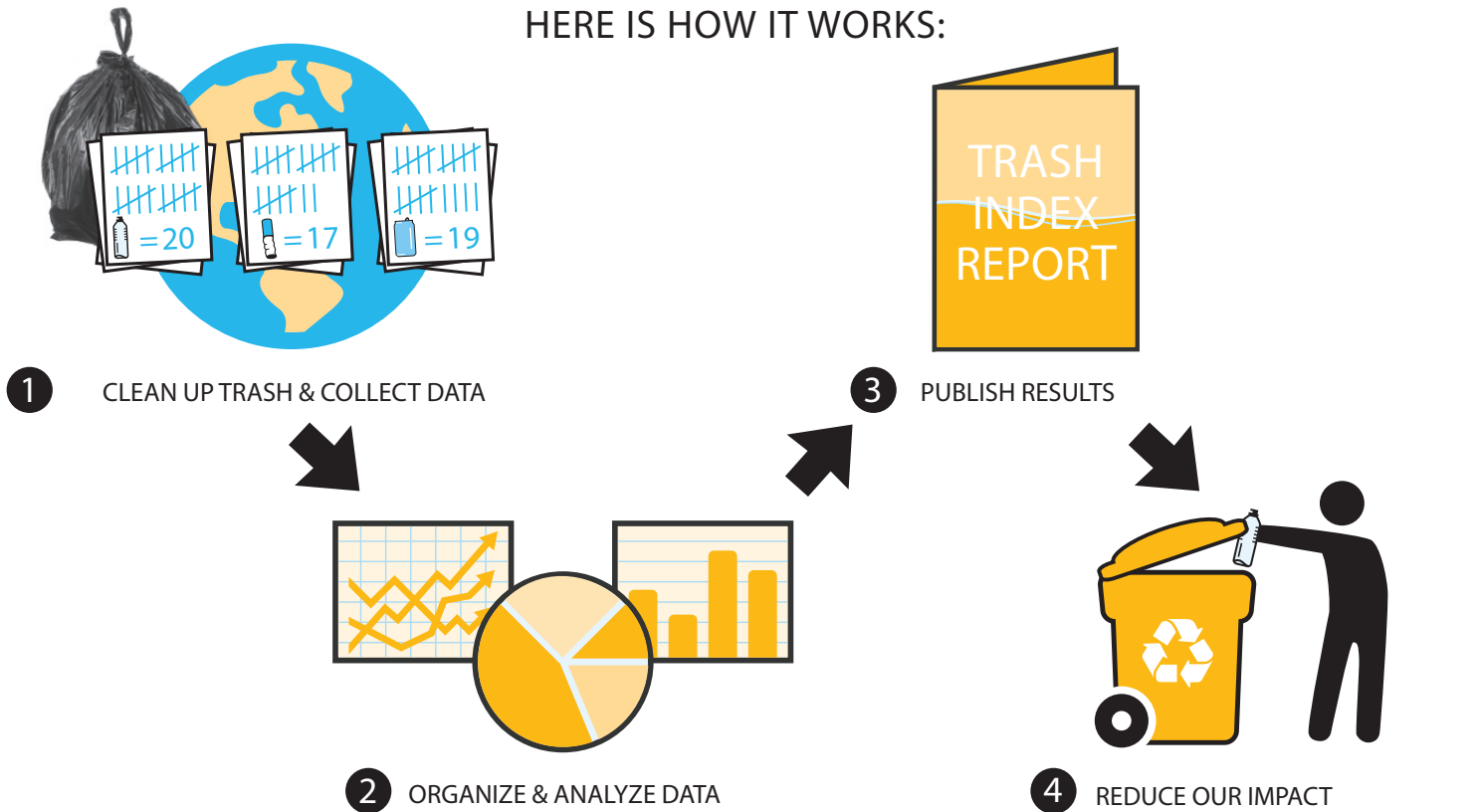
清潔香港
HONG KONG
CLEANUP

Brought to you by:

NOMURA

Trash ranks as one of the most serious pollution problems choking our planet. Far more than an eyesore, a rising tide of litter threatens human health, wildlife, communities and economies around the world. Our planet faces many challenges, but trash should not be one of them. Ocean trash is entirely preventable, and the data you collect is part of the solution. The Hong Kong Cleanup is part of the world's largest environmental volunteer effort.

HERE IS HOW IT WORKS:



SITE INFORMATION:

Cleanup Site Name:

District or Neighborhood: Country:

NUMBER OF VOLUNTEERS WORKING ON THIS CARD:

adults children (under 12)

TYPE OF CLEANUP: Street: Park: Playground:

MOST UNUSUAL ITEM COLLECTED:

Please remember to return your data after your cleanup: simply visit HKcleanup.org and click "Submit Cleanup Data". Thank you!



城市清潔
CITY CLEANUP
CHALLENGE 比賽

www.HKcleanup.org

Organizer:

ECOZINE

OCEAN CONSERVANCY'S
International
**Coastal
Cleanup**

Global Partners :



TRASH COLLECTED

Citizen scientist: Pick up all trash and record all items you find below. No matter how small the items, the data you collect are important for better understanding the issue.

EXAMPLE: TOTAL #
 Plastic Bags: ||||| ||| = 8

Please DO NOT use words or check marks. Only **numbers** are useful data.

MOST LIKELY TO FIND ITEMS: TOTAL #

Cigarette Butts:	=	Beverage Bottles (Plastic):	=
Food Wrappers (candy, chips, etc.):	=	Beverage Bottles (Glass):	=
Take Out/Away Containers (Plastic):	=	Beverage Cans:	=
Take Out/Away Containers (Foam):	=	Grocery Bags (Plastic):	=
Bottle Caps (Plastic):	=	Other Plastic Bags:	=
Bottle Caps (Metal) :	=	Paper Bags:	=
Lids (Plastic):	=	Cups & Plates(Paper):	=
Straws/Stirrers:	=	Cups & Plates (Plastic):	=
Forks, Knives, Spoons:	=	Cups & Plates (Foam):	=

URBAN ACTIVITIES: TOTAL #

Promotional Flyers:	=
Cigar Tips :	=
Clothing / Shoes :	=
Mixed Paper :	=

PACKAGING MATERIALS: TOTAL #

6-Pack Holders :	=
Other Plastic/Foam Packaging:	=
Other Plastic Bottles (oil, bleach, etc.) :	=
Strapping Bands :	=
Tobacco Packaging/Wrap:	=

OTHER TRASH: TOTAL #

Appliances (refrigerators, washers, etc.) :	=
Balloons:	=
Furniture:	=
Cigarette Lighters:	=
Construction Materials:	=
Fireworks:	=
Tires:	=

PERSONAL HYGIENE: TOTAL #

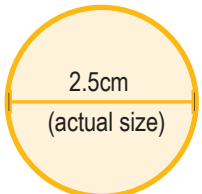
Condoms:	=
Diapers:	=
Syringes:	=

BRAND IDENTIFICATION:

#1 Most Common Brand Found:	<input type="text"/>
#2 Most Common Brand Found:	<input type="text"/>

TINY TRASH LESS THAN 2.5CM: TOTAL #

Foam Pieces	=
Glass Pieces	=
Plastic Pieces	=



DEAD/INJURED WILDLIFE	STATUS	ENTANGLED	TYPE OF ENTANGLEMENT ITEM
<input type="text"/>	Dead or Injured	Yes or No	<input type="text"/>

ITEMS OF LOCAL CONCERN:

1. <input type="text"/>	2. <input type="text"/>	3. <input type="text"/>
-------------------------	-------------------------	-------------------------

CLEANUP SUMMARY

Number of Trash Bags Filled: Weight of Trash Collected: kgs Distance Cleaned: km